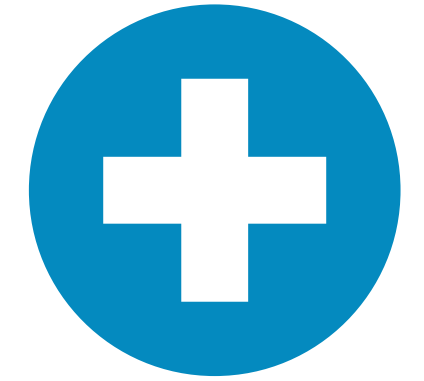




CLEP 

Innovation
Awards
2020



SUPPLIER AID FOR COVID-19 RELIEF

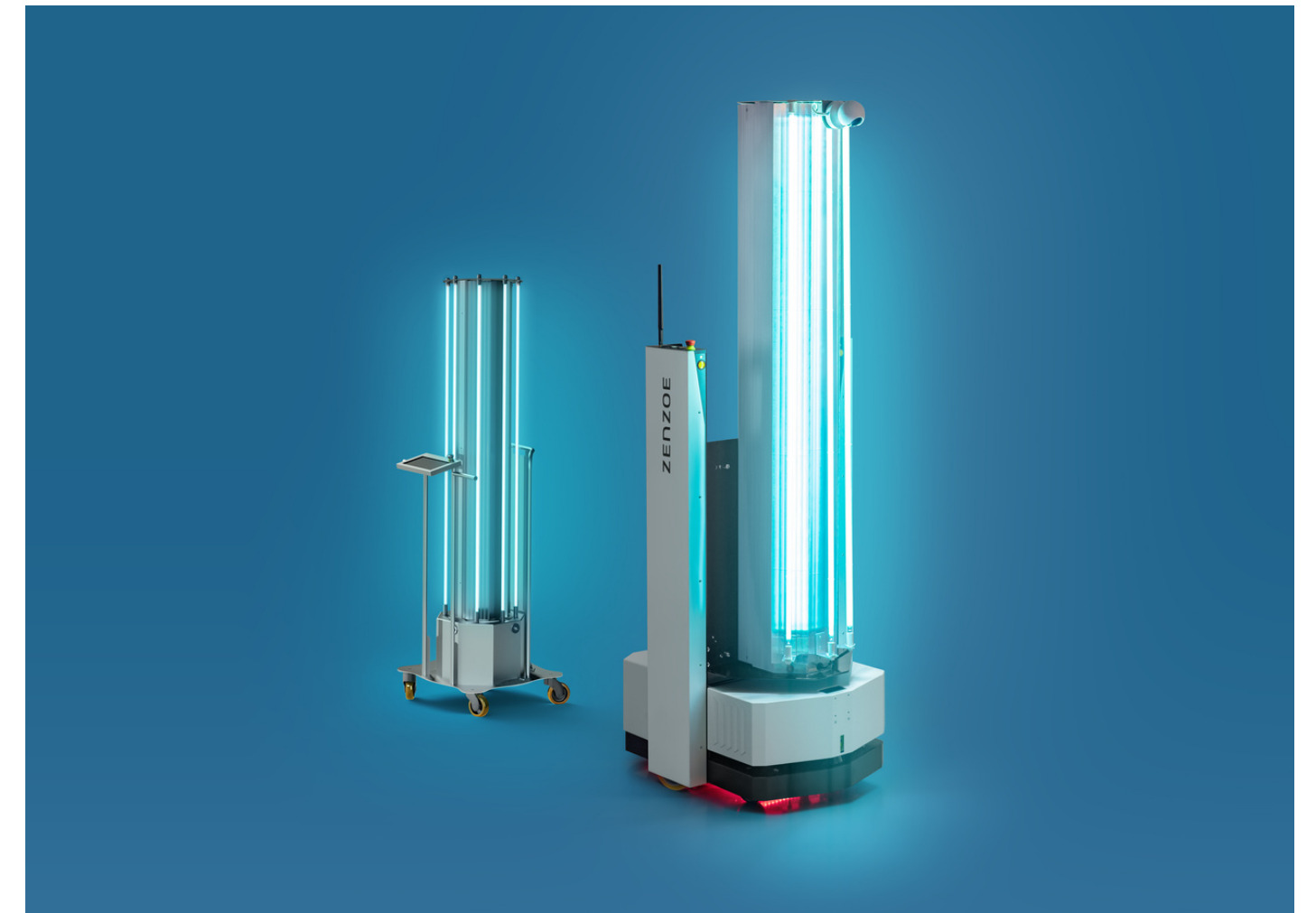
RESEARCH & TECHNOLOGY

#CLEPInnovationWeek

ASTI Mobile Robotics

ZENZOE

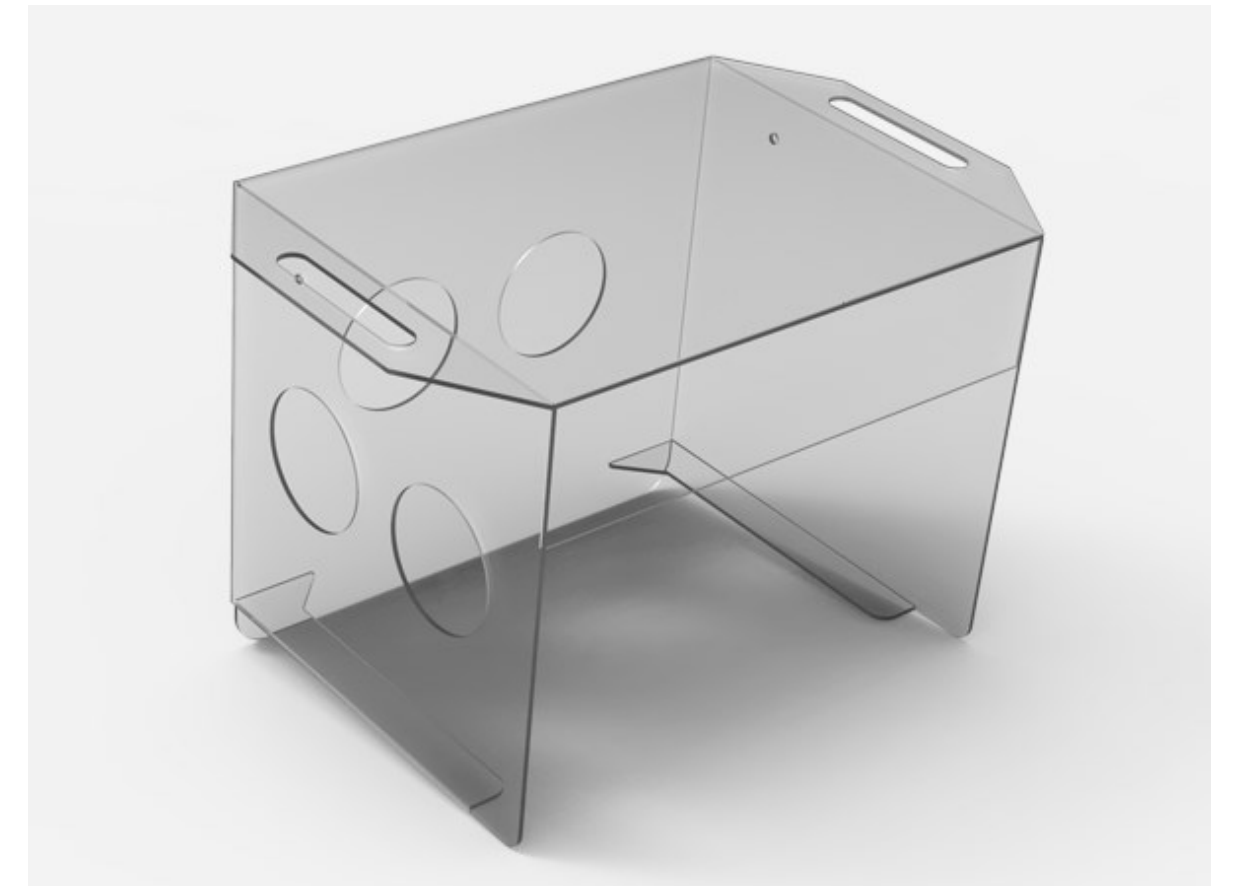
ASTI Mobile Robotics and BOOS Technical Lighting developed a robot that inactivates COVID-19 and other bacteria. Its software allows it to analyse the critical points of each location before starting the disinfection process. This allows for efficient planning, with each cycle being recorded in real time, which is subsequently verified through photosensitive tags.





PATIENT ENCLOSURE

In partnership with a Toledo-based (Ohio) hospital and 2-SCALE, Dana engineers designed and built prototypes for a patient enclosure to help treat patients infected with COVID-19. After testing, the enclosure apparatus is now being produced in limited quantities by Dana to protect healthcare workers during procedures, specifically intubations and extubations.



#CLEPAInnovationWeek

Grupo Antolin



CLEAN INTERIORS

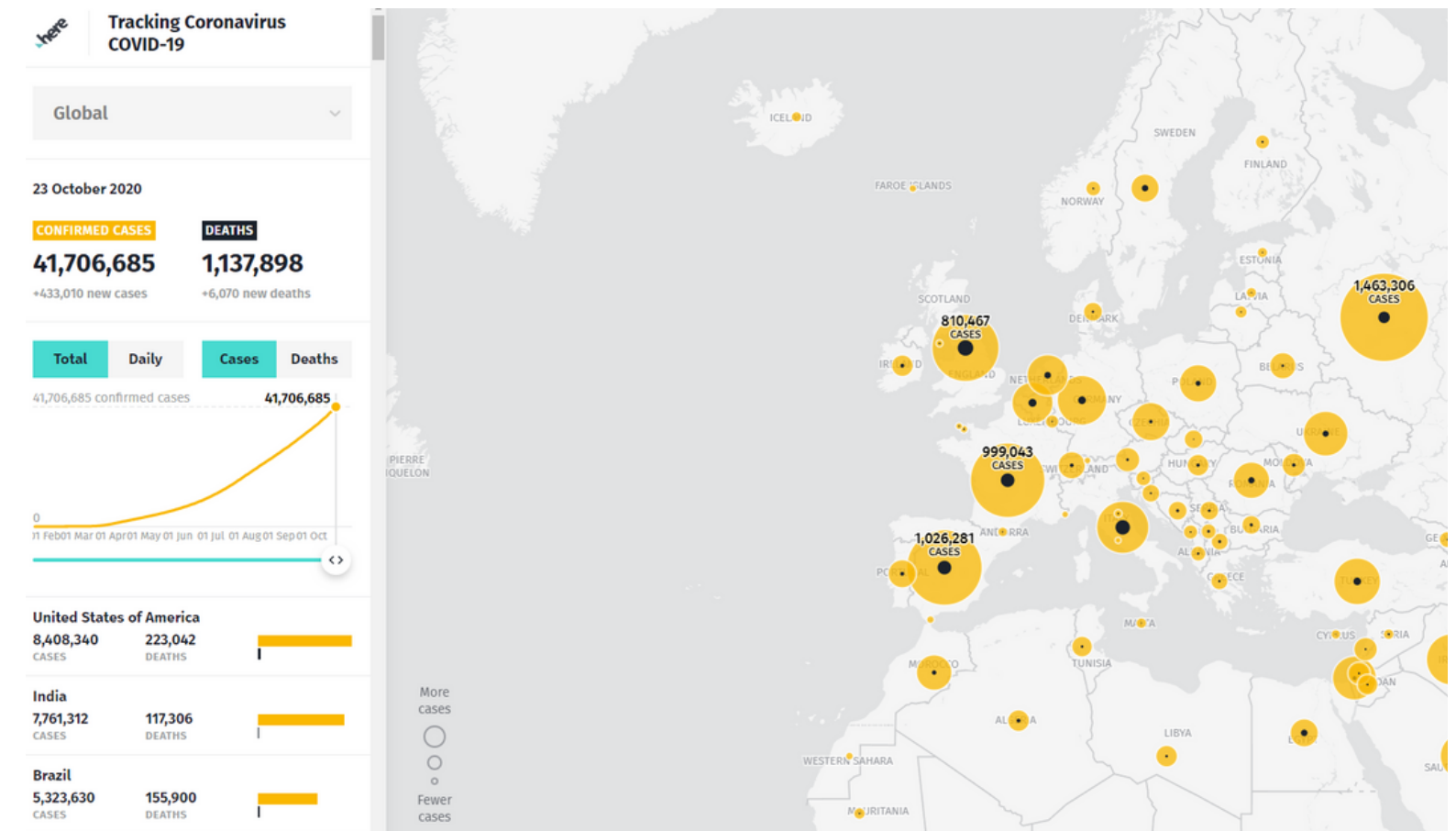
Grupo Antolin is working on a solution to improve the air quality onboard vehicles, offering safety for the occupants against the COVID-19, annual influenza strains, and high concentrations of allergens and pollutants in urban areas.



HERE Technologies

INTERACTIVE MAP

HERE Technologies created a map showing the near real-time status of COVID case numbers based on data collected by the Centre for Systems Science and Engineering (CSSE) at Johns Hopkins University and DXY.



MAHLE

OzonePRO

The MAHLE OzonePRO allows for a fully-automatic sanitation of the interior of vehicles of all sizes, including trucks and buses. It's fully automatic and sensor-controlled.



MANN+HUMMEL

PORTABLE AIR CLEANER

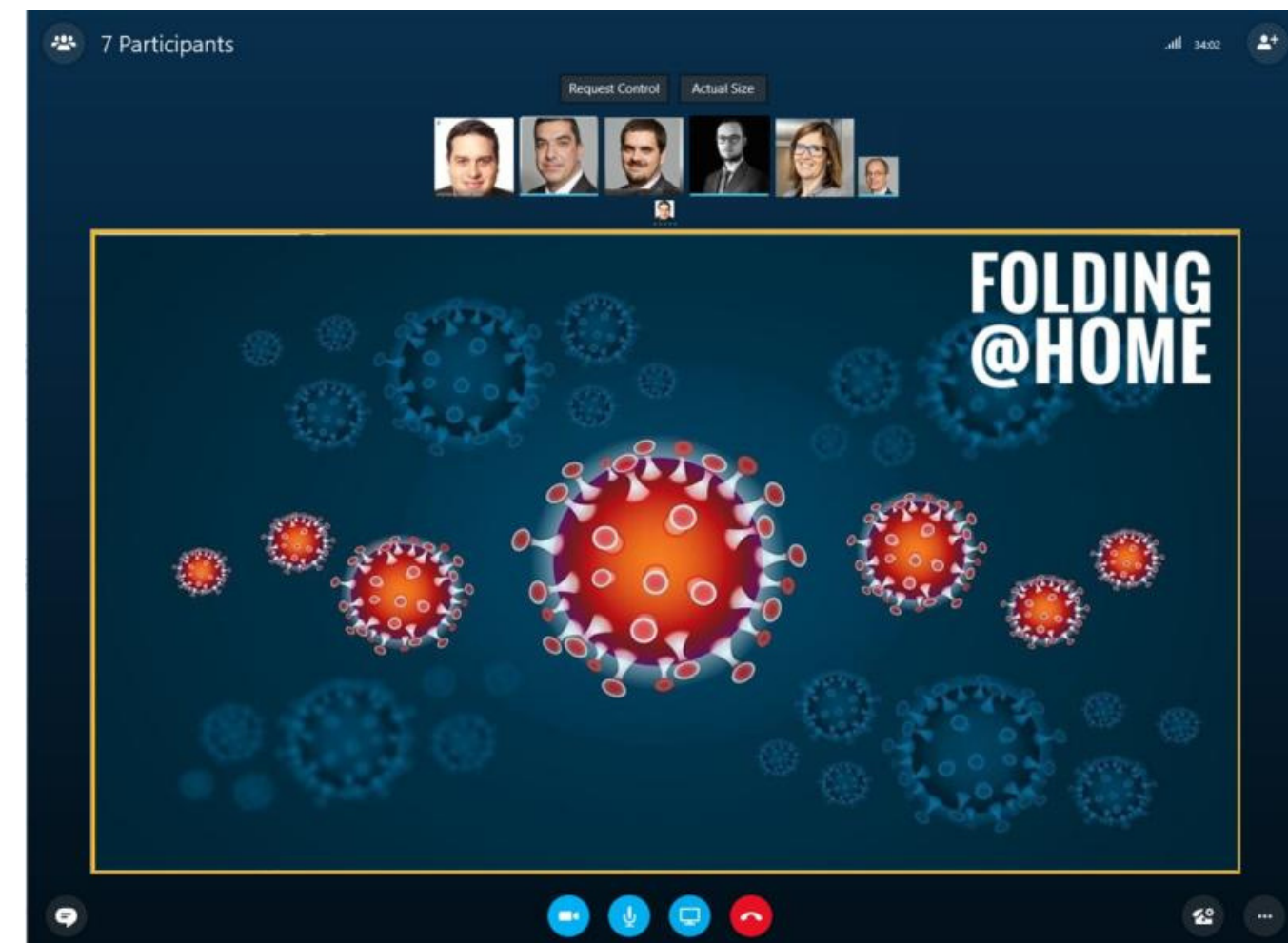
MANN+HUMMEL developed technology that uses negative pressure to scrub the virus from the air through the use of HEPA filtration and UV lights for use in medical facilities.



Plastic Omnium

IT SERVERS

Plastic Omnium's IT&S teams joined the Folding@home project to support Covid-19 scientific research by using the computing power of IT servers to drive research forward.



Robert Bosch

COVID-19 RAPID TEST

In collaboration with Randox Laboratories, Bosch developed a molecular diagnostic rapid test that can be used on a Vivalytic analyser from Bosch Healthcare Solutions.

