



European Association of Automotive Suppliers

CLEPA in brief

CLEPA, the European Association of Automotive Suppliers, represents over 3.000 companies supplying state-of-the-art components and innovative technology for the mobility of the future.

CLEPA brings together over 120 global suppliers of car parts, systems and modules and more than 20 national trade associations and European sector associations.



**75%**

of the vehicle value  
comes from suppliers



**5 million**

Direct and indirect jobs



**€30 bn**

Invested in R&D each year



**30%**

of private sector R&D  
investment in the EU



**±3.000**

Patents filed by the  
automotive industry each year



**€600 bn**

Turnover each year

# SERVICES AND BENEFITS

## ADVOCACY



CLEPA provides the principal forum for members to voice their views on vital issues affecting the automotive industry. CLEPA works to promote and influence the shape of international standards and regulations pertaining to vehicle parts. CLEPA ensures that policy makers at EU level are aware of the opinions of the European automotive sector and that they take their interests into account in new legislation and policy affecting the sector.



## INDUSTRY NETWORKING & TRADE EVENTS

CLEPA creates economic and networking opportunities through the many expert meetings, policy events and CLEPA conferences such as the Innovation Awards and the Aftermarket Conference.



## INTERNATIONAL BUSINESS SUPPORT

CLEPA promotes international cooperation and exchanges with counterpart associations and organisations worldwide.



## EXPERTISE

CLEPA provides expert support on key topics such as European Affairs, technical and vehicle legislation, legal matters, aftermarket issues, research and development and more.

CLEPA regularly participates in key European projects and guides members on how to access to funds.



## INDUSTRY NEWS & INSIGHT

CLEPA researches, compiles and disseminates information relating to vehicle parts manufacturing, as well as global and European trends in the industry.



## MEDIA RELATIONS

CLEPA is the voice of the European automotive supply industry and is committed to raising awareness about the importance of the sector through its online presence and press relations.

# ABOUT CLEPA



CLEPA is the **voice of the European automotive supplier industry** linking the sector to policy makers.



"**Our Vision** is for the European automotive supply industry to be the **leading provider** of highly efficient & sustainable **mobility** worldwide".



"**Our Mission** is to increase the **competitiveness** of the European automotive supply industry and drive its sustainable **growth** while enhancing **wealth** and **employment** for society at large".

## TOMORROW'S MOBILITY WILL BE



Safe & secure



Sustainable & circular



Connected & automated



Competitive & innovative

The CLEPA main decision-making bodies are the General Assembly, the Board of Directors and the Steering Committee.

CLEPA organises its collaboration with members via different working groups, expert' groups and task forces, to tackle specific areas of activity of the association. Working Groups regularly meet in Brussels to exchange information and define positions. They can delegate specific tasks to Expert Groups or Task Forces, as has been recently the case with the Covid-19 Task Force.

Expert Groups focus on dedicated, often highly technical topics, whereas Task Forces are constituted for a limited period of time and deal with particular issues not covered by an existing expert group.

Committees and Working Groups have an advisory role to the Board of Directors and their composition, organisation and rules of procedure of are determined in accordance with the rules laid down in the association's Internal Rules. CLEPA members are active in all of CLEPA's governing bodies, ensuring that their vision and knowledge is reflected in all CLEPA activities

### **GASG- Governmental Affairs Strategy Group**

This key Group is the platform for CLEPA to effectively coordinate all advocacy activities on behalf of the members. The group brings member expertise together for public affairs and strategy, is the main filter for all CLEPA position papers and helps prepare the Steering Committee and Board decisions.

### **WG Research & Innovation**

The mission of the Working Group R&I is to strengthen the position of automotive suppliers in the mobility research eco-system. This is implemented by defining common research priorities, communicating with other stakeholders and contributing to the EU research agenda with highly innovative projects.

### **WG Energy & Environment:**

The role of this group is to develop positions on strategic trends and issues related to sustainable mobility and road transport. Topics include, but are not limited to, enablers such as electrification and other alternative powertrain solutions, renewable fuels, advanced combustion engine technology, advanced materials, life-cycle assessment resource efficiency and circular economy.

### **WG Safety & Mobility:**

This Working Group is the prime CLEPA platform for developing positions on strategic trends and issues related to road safety and new mobility technologies, solutions, functions and systems. Topics include, but are not limited to enablers such as connectivity, automation, artificial intelligence, cybersecurity and intelligent infrastructure.

## **WG Technical Regulations:**

This Working Group is in charge of preparing, promoting and advocating CLEPA positions on a wide range of regulatory issues, spanning from road safety, automation and connectivity to sustainable transport, electrification, advanced materials and fuels

## **LAG- Legal Advisory Group**

The CLEPA Legal Advisory Group renders legal advice on proposed EU legislation, existing, future laws and administrative regulations. This includes changes to contract and liability law, commercial and corporate law, competition and antitrust law, industrial property and copyright law and insurance.

## **WG Trade**

The group focuses on the latest insights on free trade agreements, trade disputes and other global market access and restriction developments, to enable the formulation and promotion of trade positions worldwide.

## **WG Telematics**

The group provides expertise on all questions about digitalisation including vehicle connectivity with relevance for digital data-based business models. The group evaluates the feasibility and the impact of available and possible technical and economic options for Access to In-vehicle Data and Resources and other digital future businesses, e.g. new data-based mobility services.

## **WG Warranty**

Prepares, promotes and advocates CLEPA positions and strategic views on issues related to warranty. This includes providing the latest available warranty terms & conditions publicly disclosed by OEMs within a structured database available for all CLEPA and National Association members and creating industry position papers on warranty issues.

## **CAF-CLEPA Aftermarket Forum**

The CAF is a high-level group deciding which aftermarket related topics CLEPA should focus on, evaluating the trends affecting the automotive aftermarket and the possible scenarios on political topics like "Digitalisation in the Aftermarket", "Access to In-vehicle Data and Resources" and "New Type Approval" in a rapidly changing marketplace.

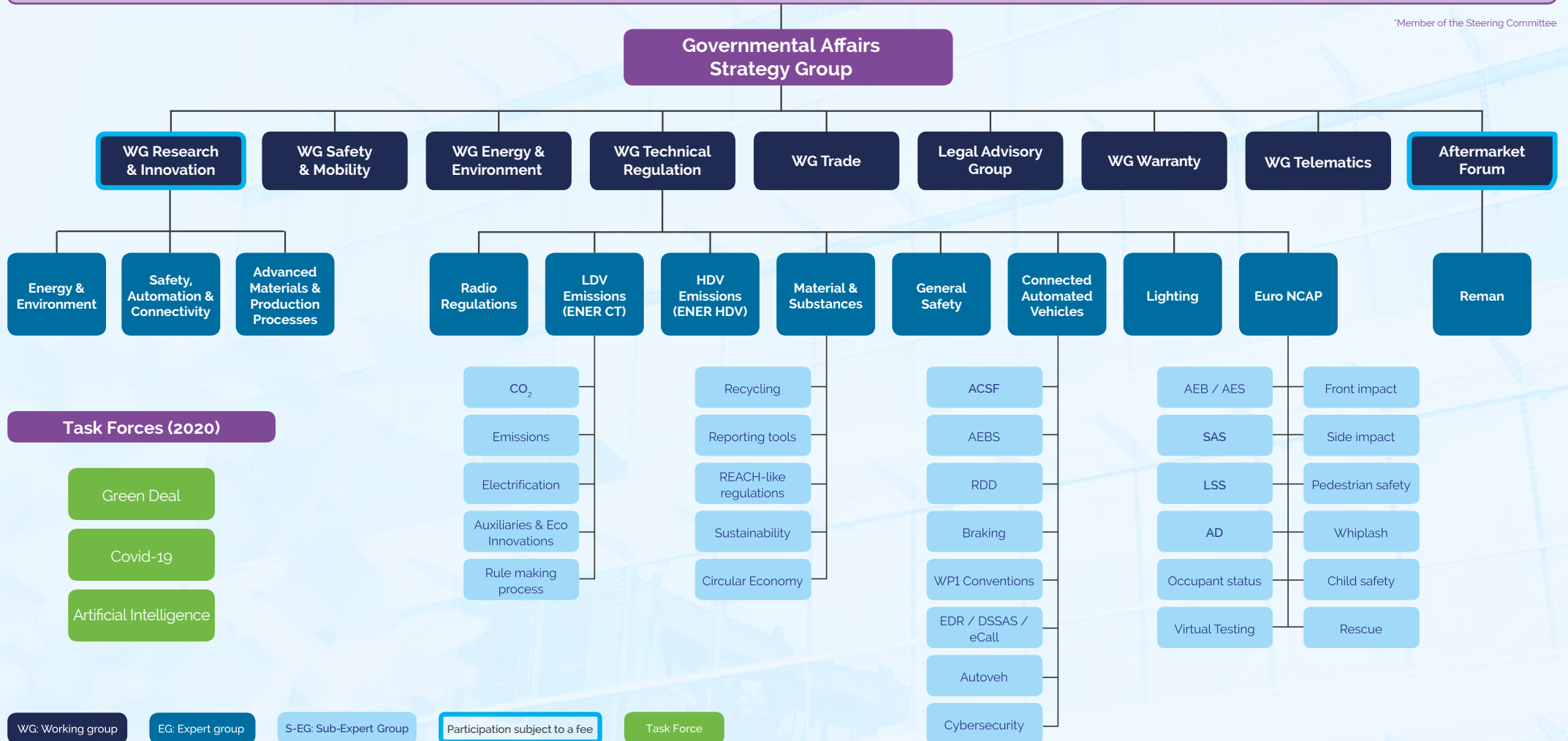


# CLEPA STRUCTURE

## Board of Directors & Steering Committee



\*Member of the Steering Committee



CLEPA advocates for **safe,**  
**sustainable & smart** mobility,  
provided by a competitive  
industry in Europe



© Copyright CLEPA · July 2020

**CLEPA** European Association of Automotive Suppliers

Cours Saint-Michel 30g  
B-1040 Brussels  
Belgium

+32 2 743 91 30  
info@clepa.be  
[www.clepa.eu](http://www.clepa.eu)

